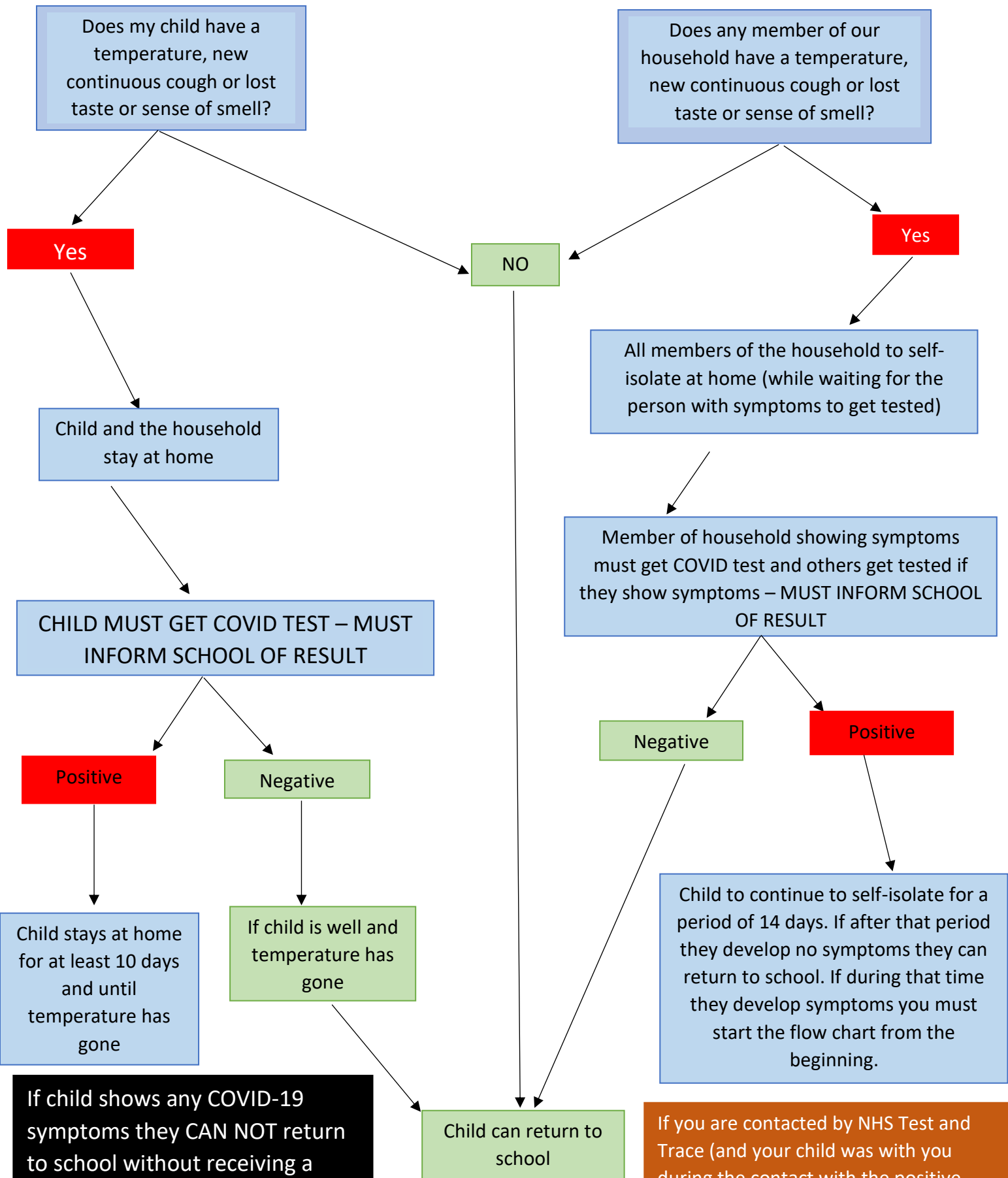


COVID SYMPTOMS AT HOME FLOW CHART



If child shows any COVID-19 symptoms they CAN NOT return to school without receiving a NEGATIVE TEST.

To Book a COVID Test:
 Call NHS 119 or visit <https://www.gov.uk/get-coronavirus-test>

If you are contacted by NHS Test and Trace (and your child was with you during the contact with the positive person you and your child must self-isolate for a period of 14 days. If during that time you or your child develop symptoms you must start the flow chart from the beginning.